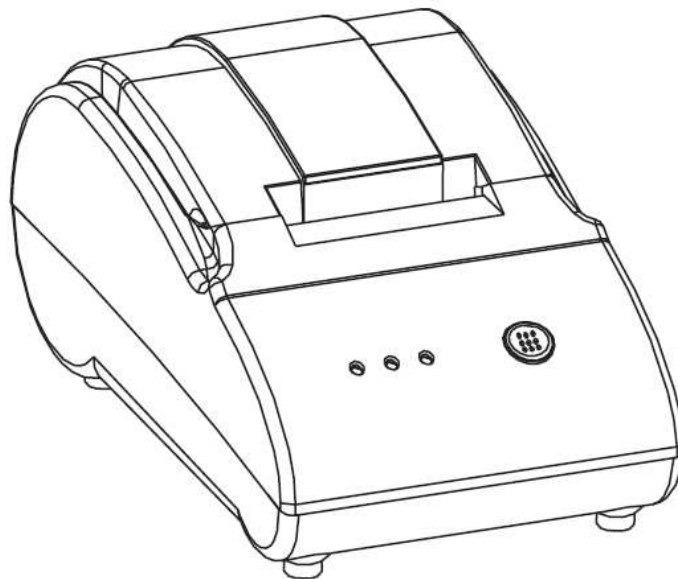




Adam Equipment

ADAM THERMAL PRINTER

(P.N. 3126611270 Revision B2, November 2012)



Easy Reference:

Serial number of the printer:	
Model of the product linked to this printer:	
Software revision number of the product linked to the printer:	
Serial number of the product linked to the printer:	
Date of Purchase:	
Name of the supplier and place:	

CONTENTS

1.	INTRODUCTION.....	2
2.	SETTING UP	3
3.	TECHNICAL SPECIFICATIONS	4
4.	PRINTER INSTALLATION AND OPERATION.....	6
4.1	Packing List.....	6
4.2	Printer connection	7
5.	PAPER ROLL INSTALLATION.....	8
6.	FRONT PANEL DESCRIPTIONS	8
7.	SERIAL INTERFACE	9
8.	ATP BAUD RATE SETTING INSTRUCTIONS	10
9.	COMMAND FUNCTION LIST	11
	WARRANTY INFORMATION.....	12

1. INTRODUCTION

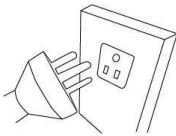
- The Adam Thermal Printer is a general purpose thermal tally roll printer specifically designed to work with the Adam series of balances.
- The printer comes preset to work with the default RS-232 interface found on the Adam balances but can easily be changed to work on other equipment as well.
- The printer is easy to use with only an On/Off switch and a paper feed button.

2. SETTING UP

CAUTION:



Avoid extremes of temperature. Do not place in direct sunlight or near air conditioning vents.



Avoid unstable power sources. Do not operate near large users of electricity such as welding equipment or large motors.



Avoid high humidity that might cause condensation, and keep away from direct contact with water.

IMPORTANT

Clean the print head regularly to avoid poor print quality, only attempt to clean when the printer is off and the head has had time to cool. Clean with a soft cloth using diluted alcohol.

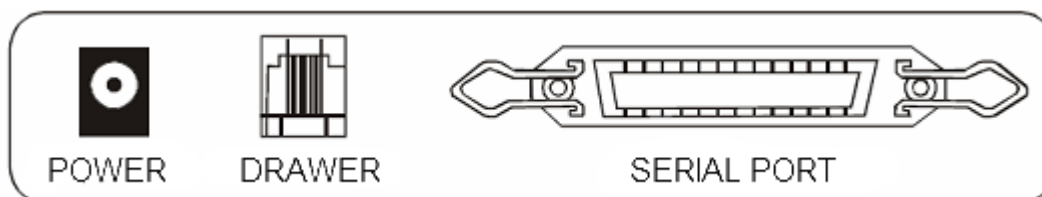
3. TECHNICAL SPECIFICATIONS

- Print method: Thermal line printing
- Paper width: $57.5 \pm 0.5\text{mm}$
- Effective print width: 48mm
- Print speed: 50mm/s or 14 lines/s
- Print Head Performances:

Print columns: 384 dots/line or 8 dots/mm

Reliability print: 50Km

- Interface:



Serial interface: D-SUB 25 socket, optional baud rate 2400bps, 4800bps, 9600bps, 19200bps, 38400bps, 57600, 115200, default is at 4800bps, data structure no parity, 8 digital word size, 1 digital stop bit, supports RTS/CTS and XON/XOFF handshake protocol.

Cash drawer: 6 wire RJ-11 socket, DC 12V/1A output signal to drive the cash drawer.

- Characters:

ASCII character set: 12x24 dot, 1.25 (W) x3.00 (H) mm

- Print paper:

Paper type: Thermal print paper

Paper width: 57.5±0.5mm,

Paper thickness: 0.06~0.08mm

Roll outer dia. (max.): Φ51mm

Recommend thermal print paper: ADAM

Box of 10 – part number 3126011281

Box of 20 – part number 3126011282

- Printer power adaptor:

Adaptor input voltage: AC 110V/220V, 50~60Hz

Adaptor output voltage: DC 8.5V/3A

- Printer weight: 0.8kg

- Overall dimensions:

114 (W) x 184 (D) x 90 (H) mm

- Working temperature: 0~45°C

- Working relative humidity: 10~80%

4. PRINTER INSTALLATION AND OPERATION

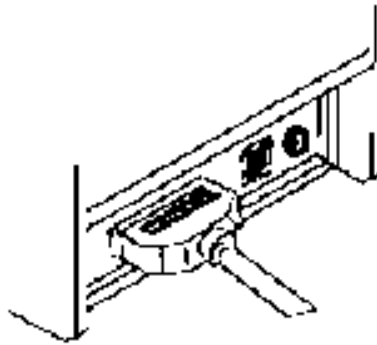
4.1 *Packing List*

Item	Part Number	Quantity
Adam Thermal Printer	2120011268	1
Power Adaptor Module	3124011269	1
Mains cable	Country dependant	1
RS 232 (25 pin to 9 pin) cable - female	3124011279	1
RS 232 (25 pin to 9 pin) cable - male	3124011273	1
Thermal paper	3126011263	1
Manual	3126611270	1

4.2 Printer connection

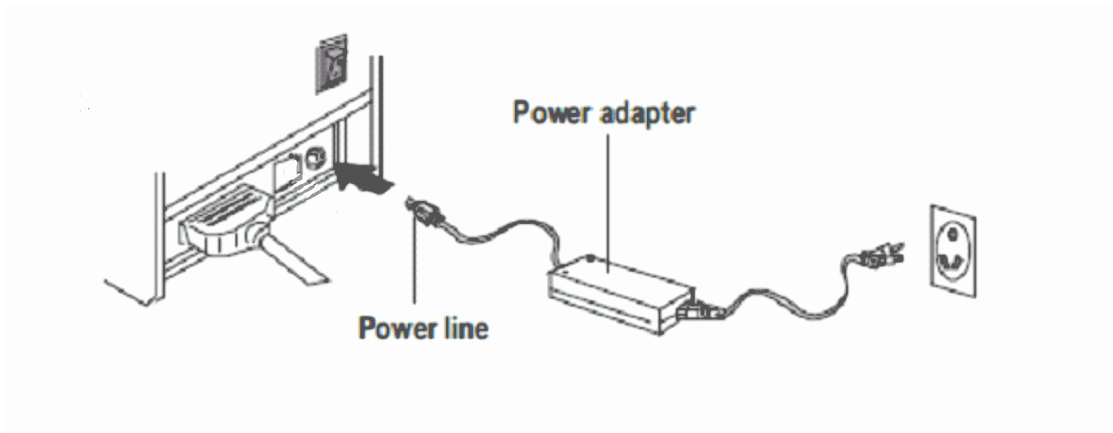
Please connect the cables as shown.

Make sure the printer and HOST machine are powered off and connect the data communication cable to the SERIAL PORT



The RJ-11 jack is for use when connecting the printer to a cash drawer.

Connect the Power adaptor to the printer and electricity supply (c)

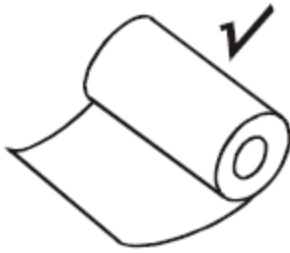


Turn the printer on using the ON/OFF switch located at the rear of the printer

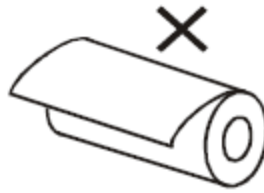
5. PAPER ROLL INSTALLATION

The thermal paper is fitted as below

- (1) Open the top cover
- (2) Place the paper roll into the space provided in the following way.



Correct direction



Wrong direction

- (3) Pull the leading edge of the paper outside of the printer and then close the top cover.
- (4) Tear off the excess paper using the cutter in the top cover

6. FRONT PANEL DESCRIPTIONS

FEED key: To feed the paper through

POWER light: Power light to indicate POWER is supplied to the printer

ERROR light: To indicate a paper jam or problem with printing

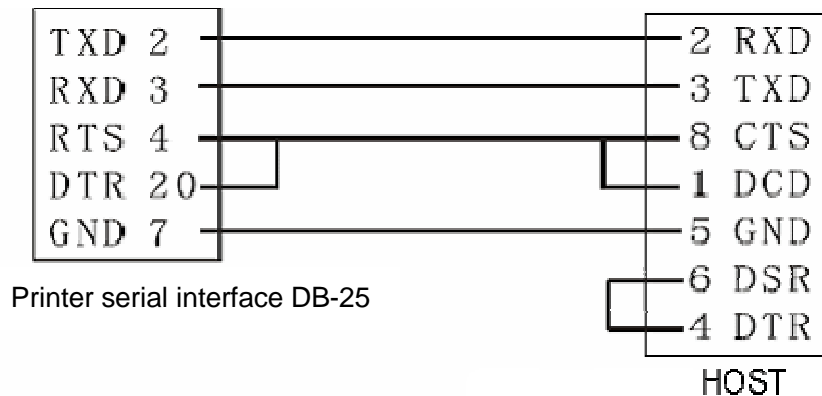
PAPER light: To indicate the printer is out of paper

7. SERIAL INTERFACE

Pin definition of serial interface:

Pins	Signal Description	Signal Source	Explanation
2	TXD	Printer	When you use XON/XOFF handshake protocol, printer sends control code XON/XOFF to the host machine.
3	RXD	Host machine	The printer receives data from the host machine
4	RTS	Printer	This signal indicates the printer status, low level indicates printer busy, can not receive data, the high level indicates printer ready, can receive data.
7	GND	—	Ground signal
20	DTR	Printer	Same with RTS signal(pin 4)

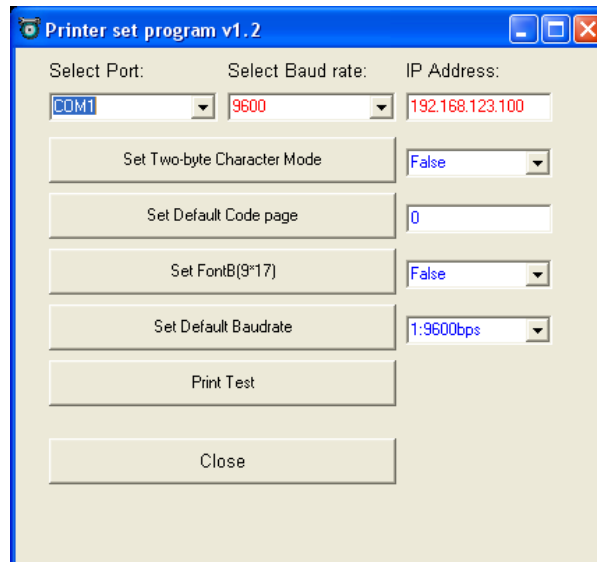
All Adam Equipment scales and balances use a 3 wire cable connection which includes TXD, RXD and GND. DTR and RTS are not required



8. ATP BAUD RATE SETTING INSTRUCTIONS

Please contact Adam Equipment to obtain the application tool required

1. Connect the ATP to your PC using the cable provided
2. Power ON the ATP
3. Open the ATP baud rate setting application
4. Select the COM port that your PC is using
5. Select the current baud rate that your ATP is set to(default is 9600)
6. Select your required baud rate from the drop down list on the right hand side
7. Click on “Set Default Baud rate”
8. Click Close
9. Power your ATP OFF and then ON again



9. COMMAND FUNCTION LIST

No.	Commands	Name
1	HT	Horizontal tab
2	LF	Print and line feed
3	CR	Print and carriage return
4	ESC SO	Select Double Width
5	ESC DC4	Disable Double Width
6	ESC SP n	Set character right space amount
7	ESC ! n	Batch specify print mode
8	ESC \$ nL nH	Specify absolute position
9	ESC % n	Specify/cancel download character set
10	ESC &	Define download characters
11	ESC *	Specify bit image mode
12	ESC - n	Specify/cancels underline mode
13	ESC 2	Set default line spacing
14	ESC 3 n	Set line feed amount
15	ESC ? n	Delete download characters
16	ESC @	Initialize printer
17	ESC D	Set horizontal tab position
18	ESC E n	Specify/cancel emphasized characters
19	ESC J n	Print and Paper Feed

WARRANTY INFORMATION

Adam Equipment offers Limited Warranty (Parts and Labour) for the components failed due to defects in materials or workmanship. Warranty starts from the date of delivery.

During the warranty period, should any repairs be necessary, the purchaser must inform its supplier or Adam Equipment Company. The company or its authorised Technician reserves the right to repair or replace the components at any of its workshops depending on the severity of the problems. However, any freight involved in sending the faulty units or parts to the service centre should be borne by the purchaser.

The warranty will cease to operate if the equipment is not returned in the original packaging and with correct documentation for a claim to be processed. All claims are at the sole discretion of Adam Equipment.

This warranty does not cover equipment where defects or poor performance is due to misuse, accidental damage, exposure to radioactive or corrosive materials, negligence, faulty installation, unauthorised modifications or attempted repair or failure to observe the requirements and recommendations as given in this User Manual. Additionally rechargeable batteries (where supplied) are not covered under warranty.

Repairs carried out under the warranty does not extend the warranty period. Components removed during the warranty repairs become the company property.

The statutory right of the purchaser is not affected by this warranty. The terms of this warranty is governed by the UK law. For complete details on Warranty Information, see the terms and conditions of sale available on our web-site.



Manufacturer's Declaration of Conformity

This product has been manufactured in accordance with the harmonised European standards, following the provisions of the below stated directives:

Restriction of the use of certain hazardous substances
in electrical and electronic equipment 2011/65/EC (RoSH)

Electro Magnetic Compatibility Directive 2004/108/EC

Low Voltage Directive 2006/95/EC

Adam Equipment Co.
Maidstone Road, Kingston,
Milton Keynes. MK10 0BD
United Kingdom

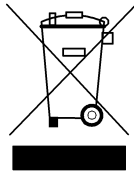
FCC COMPLIANCE

This equipment has been tested and found to comply with the limits for a Class A digital device, pursuant to Part 15 of the FCC Rules. These limits are designed to provide reasonable protection against harmful interference when the equipment is operated in a commercial environment. The equipment generates, uses, and can radiate radio frequency energy and, if not installed and used in accordance with the instruction manual, may cause harmful interference to radio communications. Operation of this equipment in a residential area is likely to cause harmful interference in which case the user will be required to correct the interference at his own expense.

Shielded interconnect cables must be employed with this equipment to insure compliance with the pertinent RF emission limits governing this device.

Changes or modifications not expressly approved by Adam Equipment could void the user's authority to operate the equipment.

WEEE COMPLIANCE



Any Electrical or Electronic Equipment (EEE) component or assembly of parts intended to be incorporated into EEE devices as defined by European Directive 2002/95/EEC must be recycled or disposed using techniques that do not introduce hazardous substances harmful to our health or the environment as listed in Directive 2002/95/EC or amending legislation. Battery disposal in Landfill Sites is more regulated since July 2002 by regulation 9 of the Landfill (England and Wales) Regulations 2002 and Hazardous Waste Regulations 2005. Battery recycling has become topical and the Waste Electrical and Electronic Equipment (WEEE) Regulations are set to impose targets for recycling.

ADAM EQUIPMENT is an ISO 9001:2008 certified global company with more than 40 years experience in the production and sale of electronic weighing equipment.

Adam products are predominantly designed for the Laboratory, Educational, Health and Fitness, retail and Industrial Segments. The product range can be described as follows:

- Analytical and Precision Balances
- Compact and Portable Balances
- High Capacity Balances
- Moisture analysers / balances
- Mechanical Scales
- Counting Scales
- Digital Weighing/Check-weighing Scales
- High performance Platform Scales
- Crane scales
- Health and Fitness Scales
- Retail Scales for Price computing

For a complete listing of all Adam products visit our website at
www.adamequipment.com

© Copyright by Adam Equipment Co. All rights reserved. No part of this publication may be reprinted or translated in any form or by any means without the prior permission of Adam Equipment.

Adam Equipment reserves the right to make changes to the technology, features, specifications and design of the equipment without notice.

All information contained within this publication is to the best of our knowledge timely, complete and accurate when issued. However, we are not responsible for misinterpretations which may result from the reading of this material.

The latest version of this publication can be found on our Website.

www.adamequipment.com